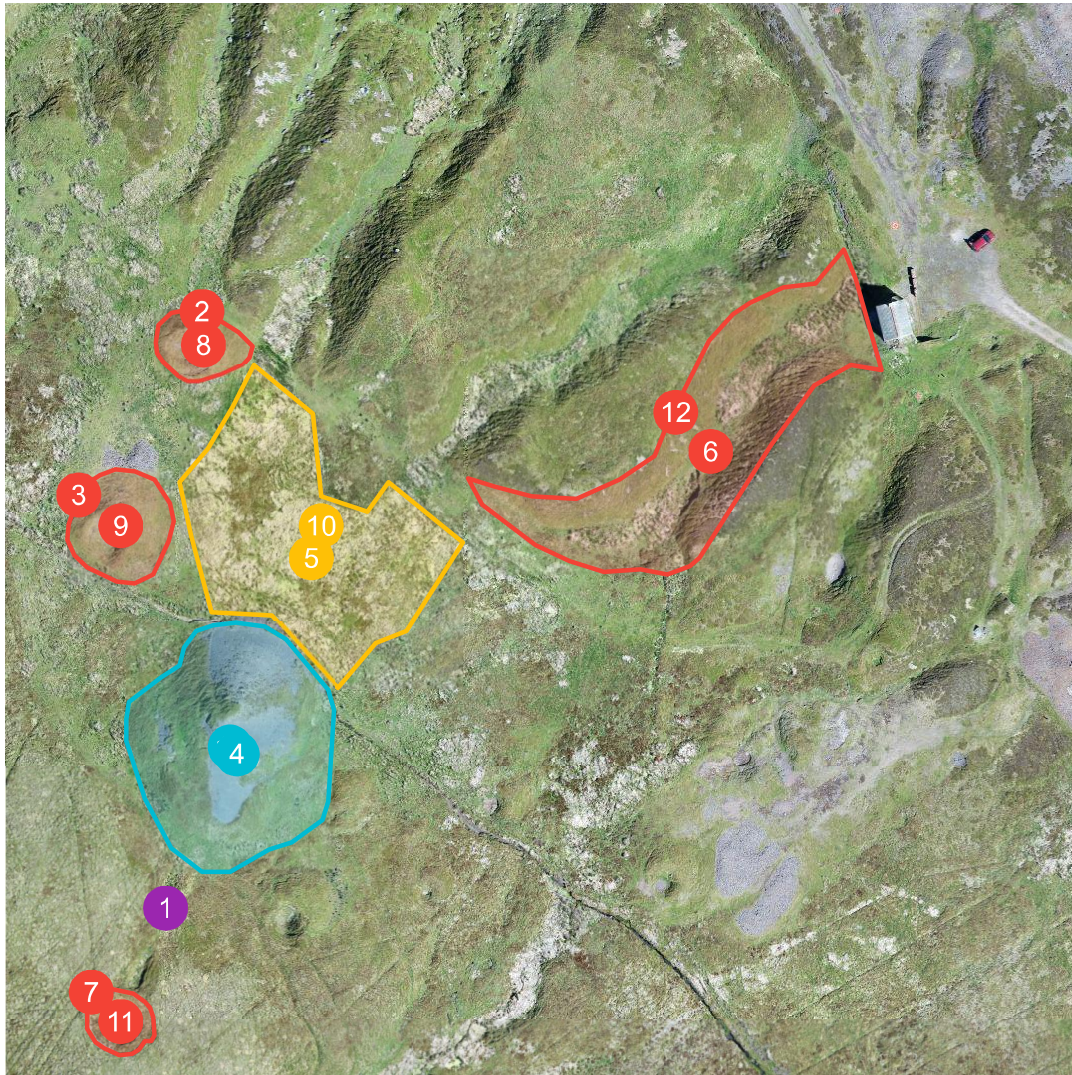


# Nenthead Mine Large Ortho Central

Map imagery captured on June 25, 2018




## Location

Label	Title	Elevation	Coordinates
1	Possible adit	539m	54.77948, -2.33526
2	Shallow workings	519.9m	54.78041, -2.33516
3	Shallow workings	524.8m	54.78013, -2.33549
4	Historic spoil-heap: minor slumping and soil-creep from north face	533.8m	54.77972, -2.33506
5	Dead vegetation, possible leaching of heavy metals from spoil-heap	524m	54.78003, -2.33487
6	"Hushing": a process whereby a stream is dammed and the water then released to remove soil and weathered rock to expose a mineral vein	509m	54.78019, -2.33378
7	Shallow workings	542.2m	54.77935, -2.33546

## Area

Label	Title	Area	Surface Area
8 	Shallow workings	150m <sup>2</sup>	160 m <sup>2</sup>
9 	Shallow workings	274m <sup>2</sup>	305 m <sup>2</sup>
10 	Dead vegetation	0.136 ha	0.142 ha
11 	Possible collapsed shaft and workings	104m <sup>2</sup>	134 m <sup>2</sup>
12 	Historic "hushing"	0.129 ha	0.156 ha

## Volume

Label	Title	Area	Volume	Cut	Fill
13 	Historic spoil-heap	0.117 ha	1995.9 m <sup>3</sup>	2055.5 m <sup>3</sup>	-59.7 m <sup>3</sup>